



OFFICE SPACE FOR LEASE • UP TO 4,089 RSF CONTIGUOUS SPACE AVAILABLE



# 3600 BEE CAVES

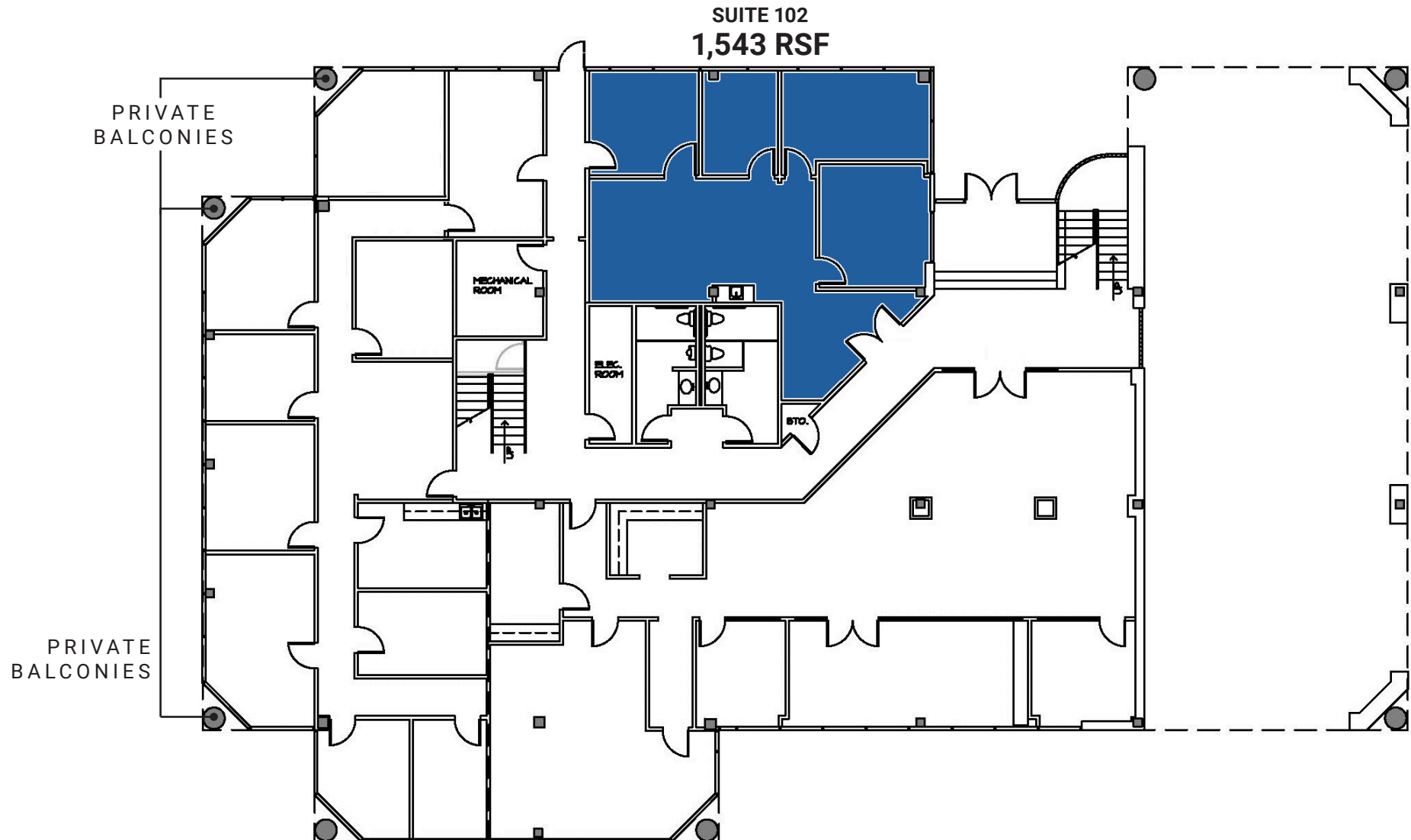
**Jeff Henley** | 512.413.5601 | [jeffhenley@kuceraco.com](mailto:jeffhenley@kuceraco.com)

**Jeffrey Henley, Jr.** | 512.415.4066 | [jhenley@kuceraco.com](mailto:jhenley@kuceraco.com)

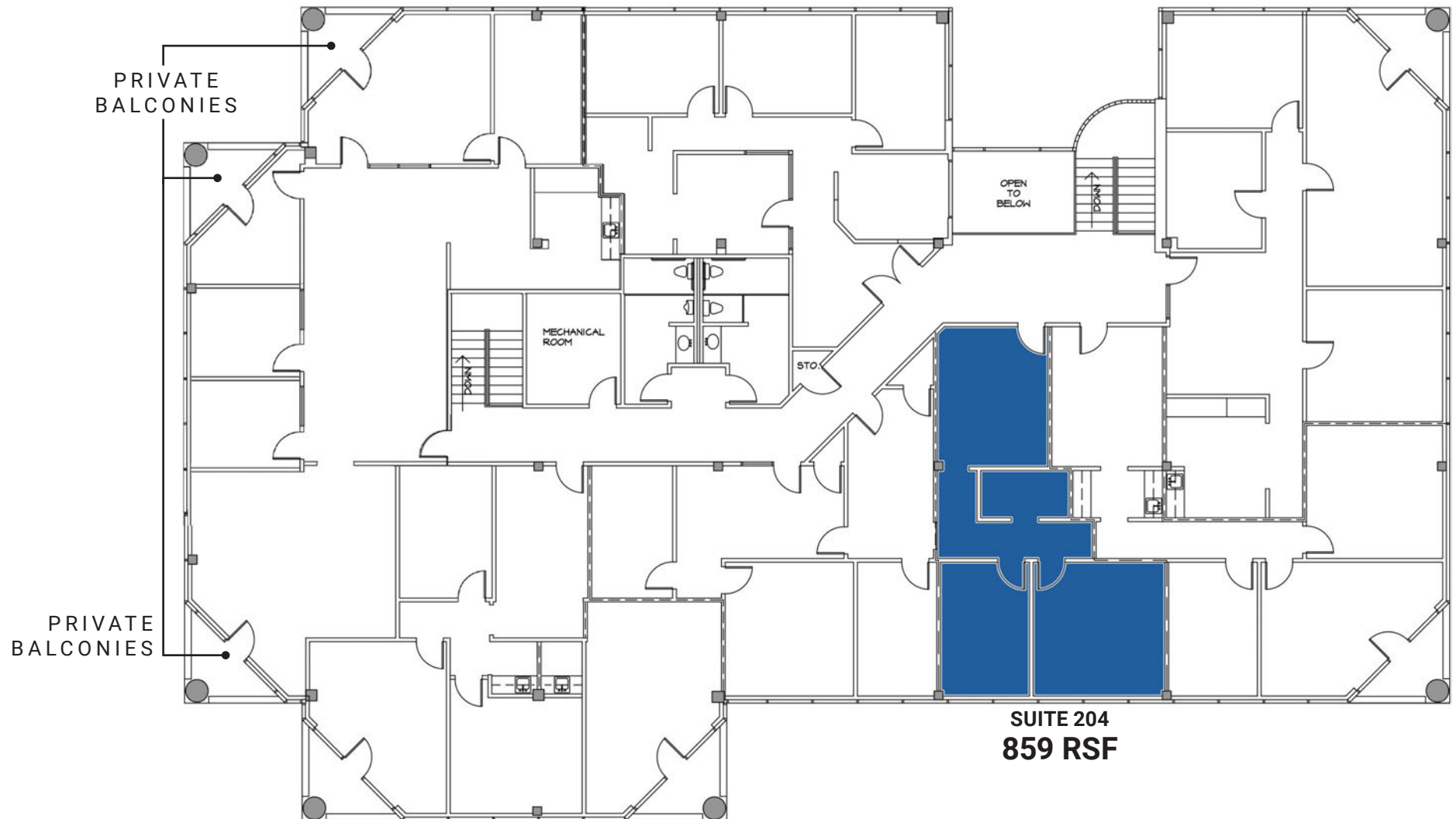
7200 N. MOPAC EXPRESSWAY | AUSTIN, TX 78731 | (512) 346-0025 | **See all of our listings at [WWW.KUCERACO.COM](http://WWW.KUCERACO.COM).**

All information contained herein, while based on information deemed reliable, has been gathered from various third-party sources, is not in any way warranted by The Kucera Companies, may not be entirely complete or accurate, and is subject to corrections, errors and/or omissions. This listing is subject to prior sale, lease, change in price and/or removal from the market without notice. The user of any information contained herein should conduct his/her own independent research including, without limitation, obtaining its own counsel and the advice of a real estate professional.



**\$21.00/RSF** 2024 NNN \$13.11**3600 BEE CAVES ROAD • AUSTIN, TX 78746****Jeff Henley** | 512.413.5601 | [jeffhenley@kuceraco.com](mailto:jeffhenley@kuceraco.com)**Jeffrey Henley, Jr.** | 512.415.4066 | [jhenley@kuceraco.com](mailto:jhenley@kuceraco.com)**7200 N. MOPAC EXPRESSWAY | AUSTIN, TX 78731 | (512) 346-0025 | See all of our listings at [WWW.KUCERACO.COM](http://WWW.KUCERACO.COM).**

All information contained herein, while based on information deemed reliable, has been gathered from various third-party sources, is not in any way warranted by The Kucera Companies, may not be entirely complete or accurate, and is subject to corrections, errors and/or omissions. This listing is subject to prior sale, lease, change in price and/or removal from the market without notice. The user of any information contained herein should conduct his/her own independent research including, without limitation, obtaining its own counsel and the advice of a real estate professional.

**\$21.00/RSF** 2024 NNN \$13.11

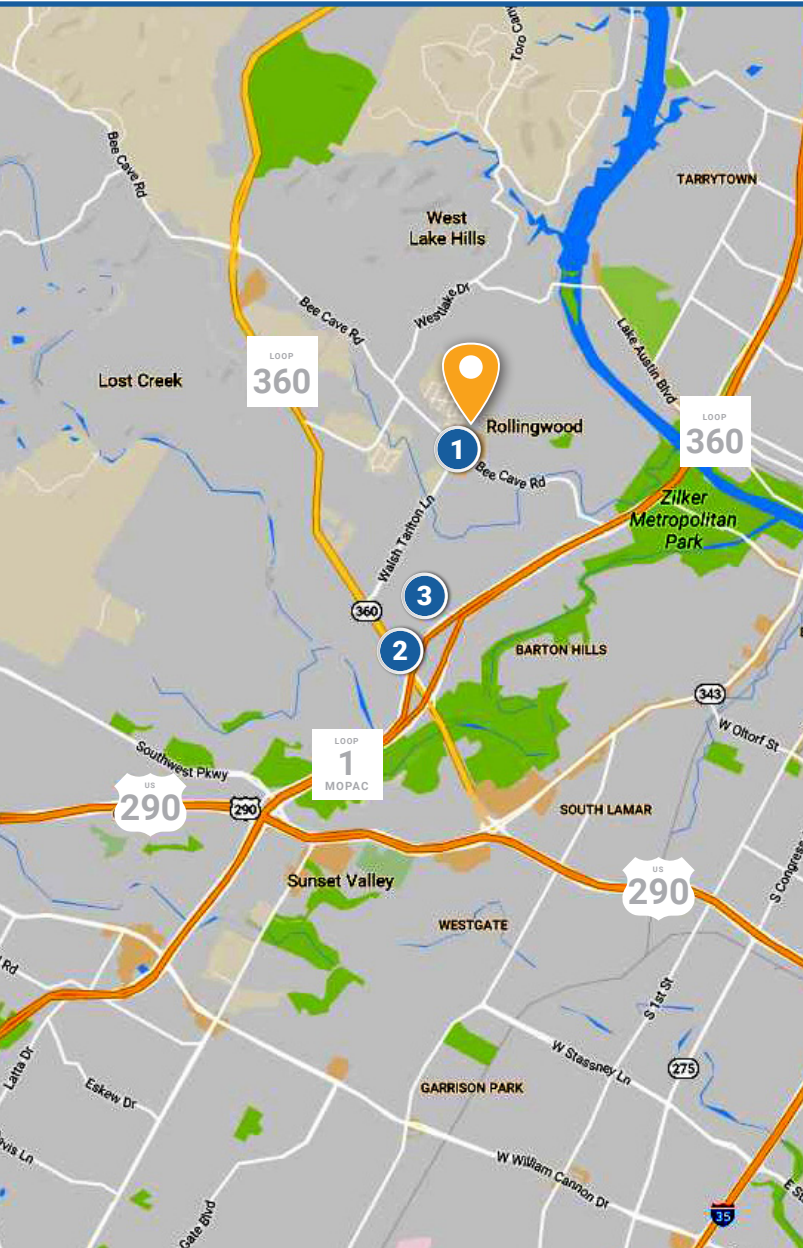
3600 BEE CAVES ROAD • AUSTIN, TX 78746

Jeff Henley | 512.413.5601 | jeffhenley@kuceraco.com

Jeffrey Henley, Jr. | 512.415.4066 | jhenley@kuceraco.com

7200 N. MOPAC EXPRESSWAY | AUSTIN, TX 78731 | (512) 346-0025 | **See all of our listings at [WWW.KUCERACO.COM](http://WWW.KUCERACO.COM).**

All information contained herein, while based on information deemed reliable, has been gathered from various third-party sources, is not in any way warranted by The Kucera Companies, may not be entirely complete or accurate, and is subject to corrections, errors and/or omissions. This listing is subject to prior sale, lease, change in price and/or removal from the market without notice. The user of any information contained herein should conduct his/her own independent research including, without limitation, obtaining its own counsel and the advice of a real estate professional.

**\$21.00/RSF** 2024 NNN \$13.11

### 1 BEE CAVE & WALSH TARLETON

- STARBUCKS
- JASON'S DELI
- BRUEGGER'S BAGELS
- TACO BELL
- RAISING CANE'S
- TRIANON COFFEE
- THUNDERCLOUD SUBS
- CHIPOTLE MEXICAN GRILL
- PINKBERRY
- MCDONALD'S
- LAS PALOMAS
- BLUE DAHLIA BISTRO
- RANDALL'S
- FEDEX OFFICE
- BEEHIVE
- FRANCESCA'S
- TOMLINSON'S FEED
- AMERICAN BANK
- BB&T
- CHASE BANK
- BANK OF AMERICA
- R BANK
- 7-ELEVEN
- POST OFFICE
- ARISE AUSTIN MEDICAL CENTER

### 2 HWY. 360 & MOPAC

- MIDWAY FOOD PARK
- RUDY'S BBQ
- ABUELO'S
- SMOOTHIE'S PARADISE
- STARBUCKS
- EBAR
- BARTON CREEK FARMERS MARKET
- UNITED HERITAGE CREDIT UNION
- CHASE BANK
- SHELL
- BEE CAVE PEDIATRICS
- YOGA YOGA WESTLAKE
- AVIS CAR RENTAL
- BUDGET CAR RENTAL
- AMC BARTON CREEK SQUARE 14
- NORDSTROM
- MACY'S
- APPLE
- T-MOBILE
- SPRINT
- DILLARDS
- OLD NAVY

### 3 BARTON CREEK SQUARE MALL

- THE CHEESECAKE FACTORY
- RUBY-THAI KITCHEN
- CAFE BISTRO
- CALIFORNIA PIZZA KITCHEN
- CHICK-FIL-A
- FRULLATI CAFE
- SMOOTHIE'S PARADISE
- STARBUCKS
- NORDSTROM
- MACY'S
- SEARS
- DILLARD'S
- JC PENNEY
- OLD NAVY
- AVIS CAR RENTAL
- APPLE STORE
- CHAMPS SPORTS
- AMC BARTON CREEK SQUARE 14
- SEPHORA
- EXPRESS
- FOREVER 21
- BANANA REPUBLIC
- BATH & BODY WORKS
- MEN'S WEARHOUSE
- ABERCROMBIE & FITCH

3600 BEE CAVES ROAD • AUSTIN, TX 78746

Jeff Henley | 512.413.5601 | jeffhenley@kuceraco.com

Jeffrey Henley, Jr. | 512.415.4066 | jhenley@kuceraco.com

7200 N. MOPAC EXPRESSWAY | AUSTIN, TX 78731 | (512) 346-0025 | **See all of our listings at [WWW.KUCERACO.COM](http://WWW.KUCERACO.COM).**

All information contained herein, while based on information deemed reliable, has been gathered from various third-party sources, is not in any way warranted by The Kucera Companies, may not be entirely complete or accurate, and is subject to corrections, errors and/or omissions. This listing is subject to prior sale, lease, change in price and/or removal from the market without notice. The user of any information contained herein should conduct his/her own independent research including, without limitation, obtaining its own counsel and the advice of a real estate professional.